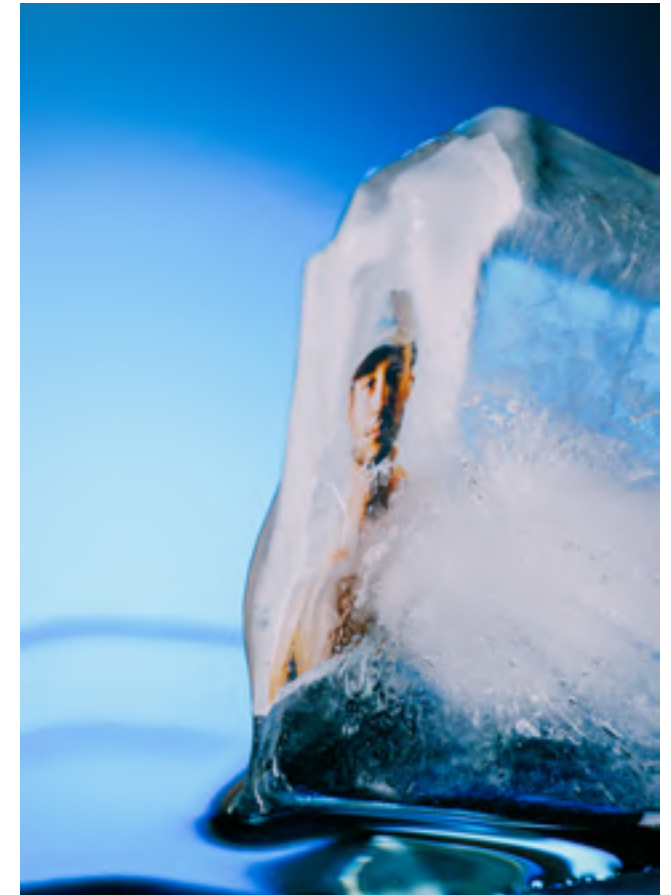


Timothée Lambrecq is a French self-taught visual artist working primarily with photography and video. After living in Reykjavik for a while and capturing iconic and underground Icelandic sceneries, he made Tokyo his new base and Japan his new playground. Privileging dynamism and authenticity over perfection and heavy post-production processes, he likes to document his journey, seizing unforgettable souls, eye-catching landscapes, and slices of life to create one-of-a-kind narratives.

He has been working under the same ethos for years, a constraint-less approach in which he intends to share his vision and invite the viewers to be part of the experience. His visuals are tinged with spontaneity and sincerity, capturing the singularity of the panoramas, moments, and humans that cross his path and lens. The progressive perspective he unfolds deconstructs photo-documentary and video-making preconceived ideas, giving him more freedom and flexibility in formats, aesthetics, and components.

More recently, he has been captivated by the beauty of nature and has made it one of his main topics. Timothée creates images witnessing the fast evolution of natural elements caused by climate change and environmental issues in a global context. He plays with lights, seasons, and landscapes to emphasize the earth's changing temper over time. Engaging, poetic, and conscious, this part of his recent work questions how humans interact with and are affected by their ever-changing surroundings.

As a collaboration-driven artist, Timothée enjoys contributing to the music and culture scenes. He has teamed up with the creative industry's mainstays, including Studio Olafur Eliasson, Björk JFDR, Kom_I, Yasuhiro Suzuki, ATARASHII GAKKO!, coming up with his vision and perspective to enhance his collaborators' works. He has been commissioned by many clients, from travel companies to groundbreaking creative studios, and has been published in media such as BBC News, i-D, Transit, Financial Times, GQ, VICE, and WIRED JP, among many others. Finally, he received support from official institutions such as The Scandinavia – Japan Sasakawa Foundation or the Japan Embassy of Iceland for his project Heikō/Heild, connecting Japan and Iceland.



[website](#)
[instagram](#)
[diary](#)

about



In this issue:

News: Toxic Masculinity • The Japanese Elf-Lover
Culture: Ísöld Uggadóttir • Jóhanna Jóhanna • Auður Lóa
Music: Flóni's Dark Trap • Sónar Recap • Pop Opera
Food: Hótel Holt Returns • Black Box Pizza Opens
Travel: Borgarfjörður fýstri • Ísafjörður Adventure



GIG GUIDE × CITY MAP × TRAVEL IDEAS × FOOD | It's Free!

Condénast
88Rising
Carolina Herrera
Veuve clicquot
Bosch
Because Music
Studio Olafur Eliasson Lululemon
Virgin Music
Harley davidson Rhyzomatiks
Transit Magazine
Wired JP Voyageurs du Monde
Unicef
Iceland Airwaves Mutek JP
Bunshun (株式会社文藝春秋) Discover Japan
Sanu
The Reykjavik Grapevine Quaras
Protein
Monopo
Yasuhiro Suzuki DjBroadcast
Iceland Music Export
The University of Tokyo

...

selected clients



BBC news
Billboard
Crack Magazine
De Volkskrant
DjBroadcast
Groove Magazine
iD
Clash Magazine
Mixmag
Pitchfork
The Quietus
The Reykjavik Grapevine
The Financial Times
Trax Magazine
UnderTheRadar
VICE
Chorareii
Radical art review
Neut Magazine
Exit Magazine
DesignBoom
Boooooom
Irish Times
Wired JP

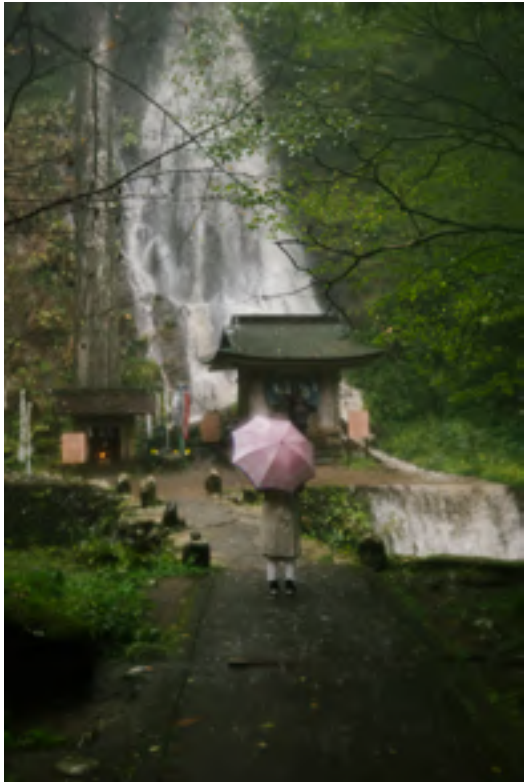
...

seen in









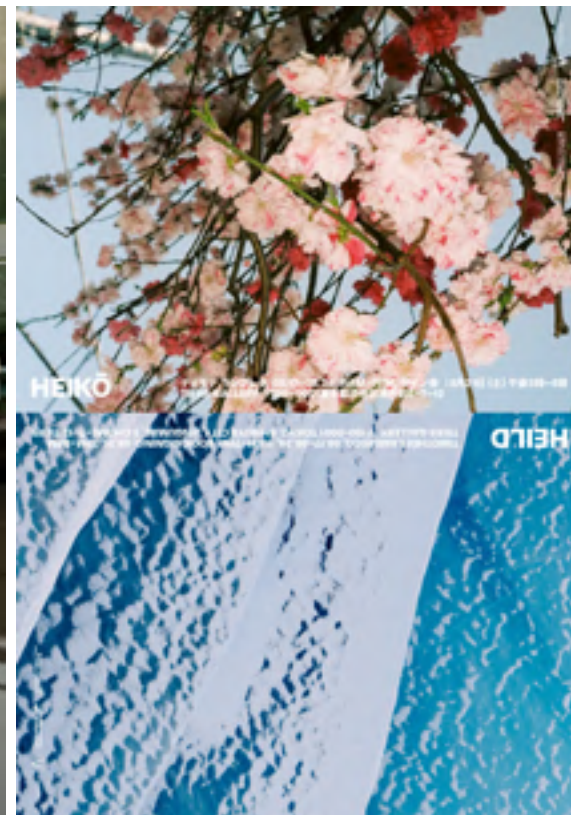












Heikō / Heild
Solo exhibition show
and book release
Tiers Gallery
Tokyo 2021

Lack
Collaborative installation
Debris
Tokyo 2020

Nature and Adventure
Solo Shows
Jardins en Scène
Neuilly sous Clermont 2016
Maison du velo Nancy 2016



shows











